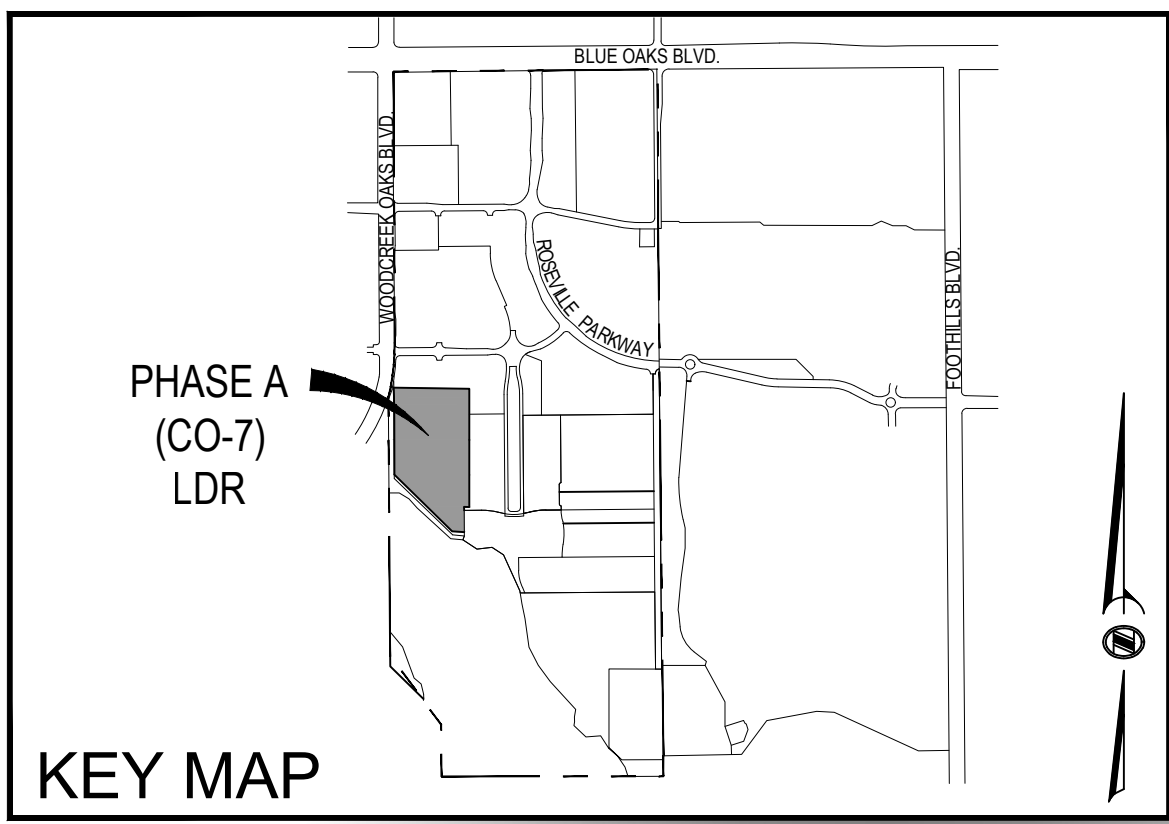


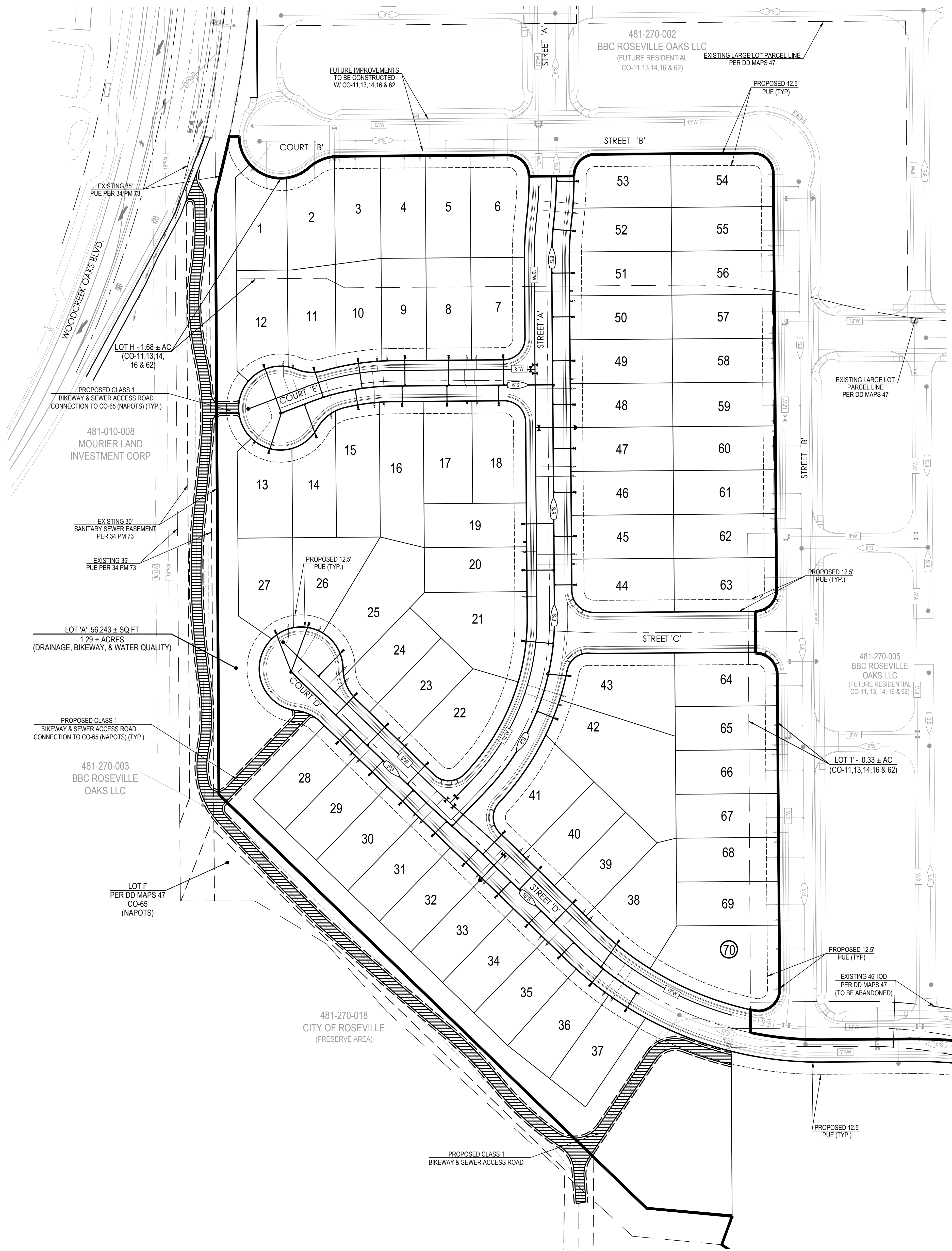
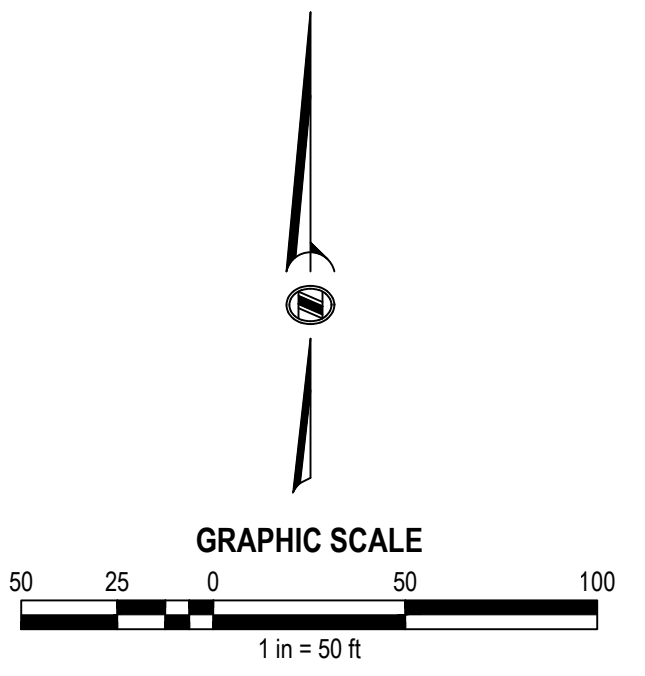
CONSULTANT

APPROVALS



KEY MAP

PRELIMINARY UTILITY PLAN
 CAMPUS OAKS
 MASTER PLAN -1, 2, 3, 6, 7, 24, 61,
 63, 64 AND PORTIONS OF 11, 12, & 14
 PHASE A
 SHEET 5 OF 7



ABBREVIATIONS

| | |
|-----|---------------------------------|
| I/O | IRREVOCABLE OFFER OF DEDICATION |
| PUE | PUBLIC UTILITY EASEMENT |
| EVA | EMERGENCY VEHICLE ACCESS |

SYMBOLS

| EXISTING | PROPOSED | DESCRIPTION |
|----------|----------|----------------------------|
| | | SANITARY SEWER PIPE & SIZE |
| | | DOMESTIC WATER PIPE & SIZE |
| | | SANITARY SEWER MANHOLE |
| | | GATE VALVE |
| | | FIRE HYDRANT |
| | | BLOW OFF VALVE |
| | | AIR RELIEF VALVE |
| | | WATER SERVICE |
| | | SEWER SERVICE |

| NO | DATE | DESCRIPTION |
|----|------|-------------|
| | | |
| | | |
| | | |
| | | |
| | | |
| | | |
| | | |
| | | |
| | | |
| | | |
| | | |

REVISIONS

BENCH MARK
 ELEV = 112.83
 3-1/4" BRASS DISC STAMED L5614, TOP OF CURB
 WEST SIDE OF DI @ SE CORNER OF WASHINGTON BLVD. &
 ROSEVILLE PARKWAY @ NE END OF CURB RETURN

COMPUTED BY

DESIGNED BY GJB

DRAWN BY

PROJECT ENGINEER GJB

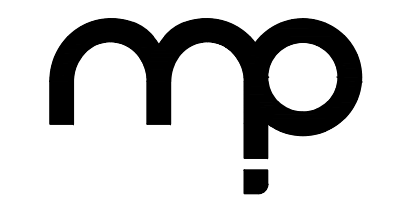
PROJECT
 ENTITLEMENT DRAWINGS FOR
**CAMPUS OAKS
 MASTER PLAN**
 CO-1, 2, 3, 6, 7, 24, 61, 63 & 64
 AND PORTIONS OF 11, 12, & 14
PHASE A
 ROSEVILLE, CA

DRAWING
**PRELIMINARY
 UTILITY PLAN**

| | | | |
|------------|----------------|-------|---|
| DATE | MARCH 11, 2020 | SHEET | 5 |
| SCALE | 1"=50' | OF | 7 |
| JOB NUMBER | 13-0076-03 | | |

City of Roseville Approval

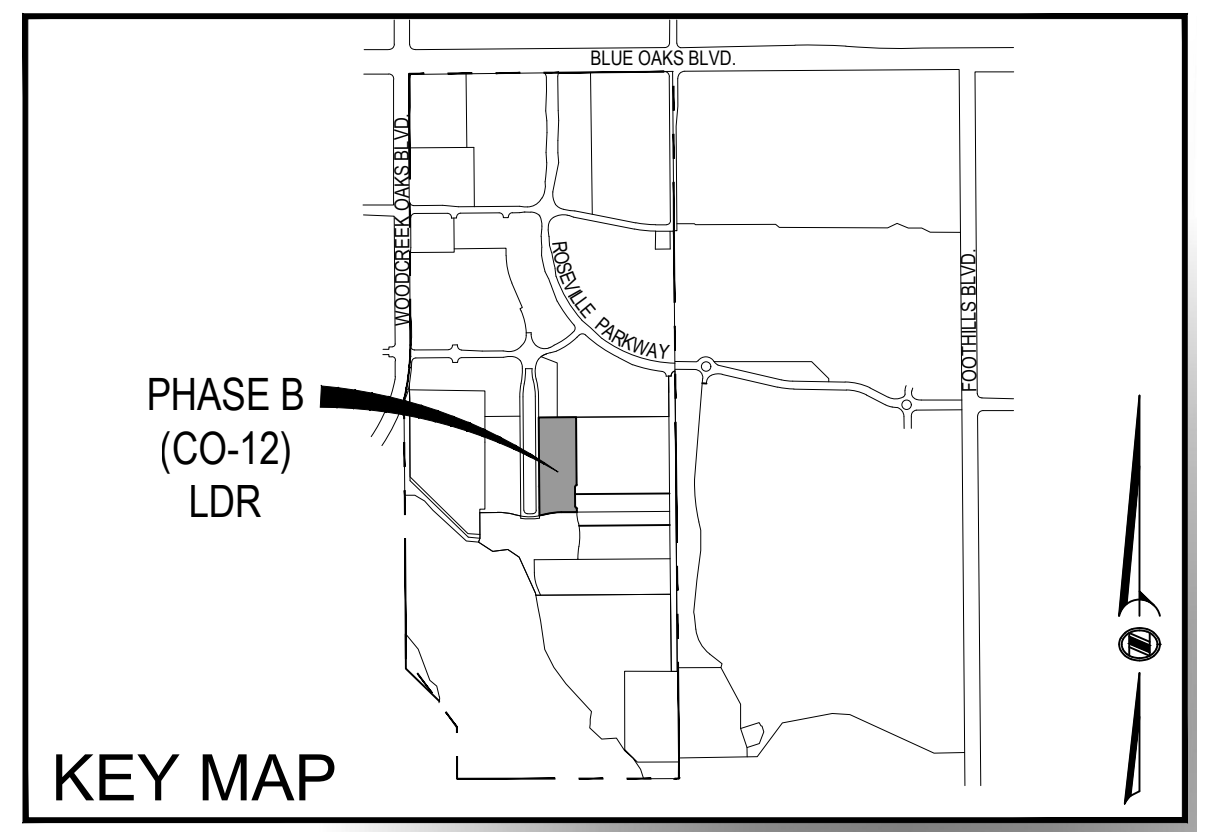
NOT FOR CONSTRUCTION



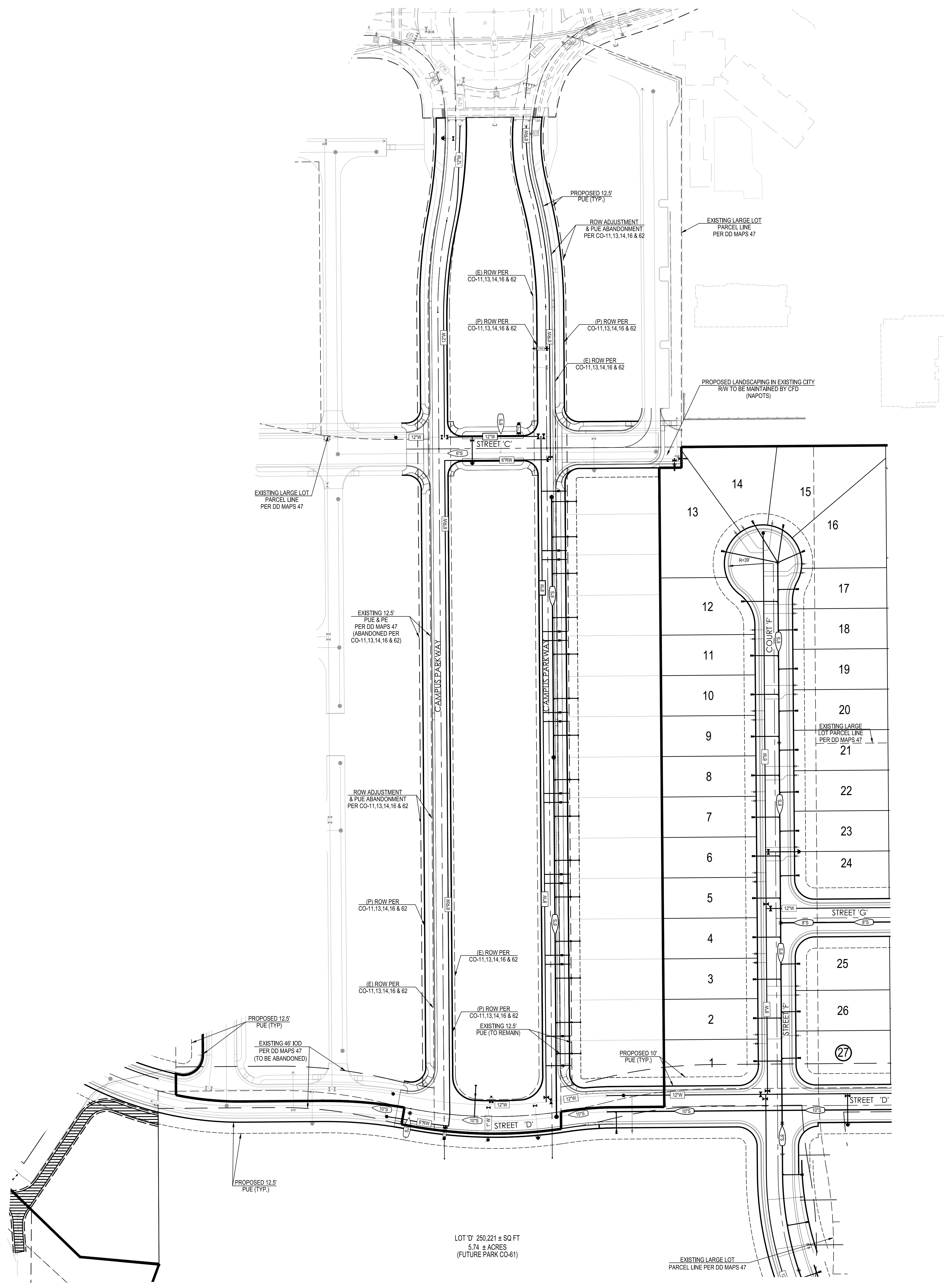
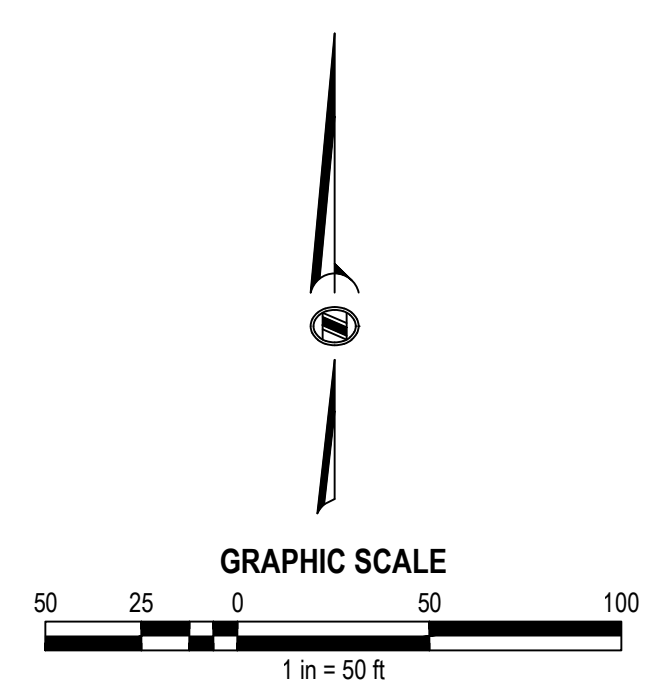
MORTON & PITALO, INC.
 CIVIL ENGINEERING • LAND PLANNING • LAND SURVEYING
 Folsom • Fresno
 75 Iron Point Circle, Suite #120
 Folsom, CA 95630
 phone: (916) 958-7221
 web: www.mpeingr.com

CONSULTANT

APPROVALS



PRELIMINARY UTILITY PLAN
 CAMPUS OAKS
 MASTER PLAN - 1, 2, 3, 6, 7, 24, 61,
 63, 64 AND PORTIONS OF 11, 12, & 14
 PHASE B
 SHEET 6 OF 7



| EXISTING | PROPOSED | DESCRIPTION |
|----------|----------|----------------------------|
| | | SANITARY SEWER PIPE & SIZE |
| | | DOMESTIC WATER PIPE & SIZE |
| | | SANITARY SEWER MANHOLE |
| | | GATE VALVE |
| | | FIRE HYDRANT |
| | | BLOW OFF VALVE |
| | | AIR RELIEF VALVE |
| | | WATER SERVICE |
| | | SEWER SERVICE |

SYMBOLS

| NO | DATE | DESCRIPTION |
|----|------|-------------|
| | | |
| | | |
| | | |
| | | |
| | | |
| | | |
| | | |
| | | |
| | | |
| | | |
| | | |

REVISIONS

BENCH MARK

ELEV = 112.83
 3-1/4" BRASS DISC STAMED L55614, TOP OF CURB WEST SIDE OF DI @ SE CORNER OF WASHINGTON BLVD. & ROSEVILLE PARKWAY @ NE END OF CURB RETURN

COMPUTED BY

DESIGNED BY GJB

DRAWN BY

PROJECT ENGINEER GJB

PROJECT
 ENTITLEMENT DRAWINGS FOR
**CAMPUS OAKS
 MASTER PLAN**
 CO-1, 2, 3, 6, 7, 24, 61, 63 & 64
 AND PORTIONS OF 11, 12, & 14
PHASE B
 ROSEVILLE, CA

DRAWING
PRELIMINARY UTILITY PLAN

| DATE | SHEET |
|----------------|----------|
| MARCH 11, 2020 | 6 |
| SCALE | 1" = 50' |
| JOB NUMBER | OF |
| 13-0076-03 | 7 |

NOT FOR CONSTRUCTION

City of Roseville Approval

